



The Studio and Yurts Toad Hall
Wheal Enys Farm
Porkellis
Cornwall
TR13 0EE
01326340360

Arrival and Departure

The arrival time is anytime after 3.30pm.

Sometimes we might be able to say earlier and if the Studio or Yurts ready before this time I can text you if you send me your mobile number,
My mobile number is 07779581886, you can text me if you arrive in Cornwall early and I can give you a time the Studio or Yurt/s will be ready for you.

Leaving time is normally 10.30am on the day you leave.

Payment of the balance is on arrival, by cash or cheque or PayPal. To pay by PayPal there is a small extra charge to take account of PayPal deductions

The Studio door will be unlocked with the key in the inside, and the Yurts can not be locked but are safe due to their situation. If you do not immediately see us please park in front of the Studio or go down to the Yurt field and park in the marked parking space and make yourselves at home. I will come and show you everything works and where everything is briefly upon your arrival and you can always get us during the week if you need us by ringing on our front door.

I enclose directions below

By Road:

- Join the A 30 where convenient to you then turn off at Redruth and take the Helston road, the B3297
- Go through the villages along that road, Four lanes, Burras and Farms Common - they are only small hamlets so you may miss them as you pass
- Continue until you get to the turning for on the left for the 'Poldark mine' tourist attraction, about 6 miles from Redruth, this is also the turning signposted to Porkellis.

- Take the turning to Porkellis - continue past Poldark mine for approximately a mile to the village
- If you have come in via the 'right' road (there are three from the Helston Redruth road that take you to Porkellis but the best one to take is the one that goes past Poldark Mine) You will see a phone box, a small bus shelter and the Star Inn on your right. If you cannot find us ask in 'the Star if open or anyone if not.
- This is a tee junction and there will be black and white bollards in front of you next to a small pavement.
- Turn right, round the Star Inn
On your left opposite, and just past, the Star Inn car park is a lane with two newish houses at the bottom.
- Turn up this lane - it is an unmade bridle track but it is OK for cars - and at the top turn left into a farm gate into a yard
- Once in the yard - this is our yard - go straight ahead in front of the white house and the drive will open out into a gravelled car park
- **For the Studio** - Park anywhere in front of the Studio and if you do not see us, ask at our front door which is on the left hand side, but if we are not in - please do not wait and make yourself at home in The Studio which will be open and we will be about somewhere
- **For the Yurt/s** – drive through the gate which has a sign to the Yurt/s into the fields and turn left. The ground has hardcore underneath it so you can drive on it.
- **The Yurt parking place** is marked on the left hand side just before you go through the **gate to the Yurt field**. But you are welcome to park in front of the Yurt/s to unload or park there all week if you wish (the only place you cannot park is at the bottom of this field and behind the shower cabin as the drains are there)

Google map:

<http://maps.google.co.uk/maps?f=q&hl=en&geocode=&q=TR130EE&ie=UTF8&om=1&ll=50.159085,-5.231853&spn=0.013857,0.028839&z=15&iwloc=addr>

or

UK Multimap link is:

<http://www.multimap.com/maps/?&hloc=GB|TR130EE#t=l&map=50.15764,-5.23181|16|4&loc=GB:50.15764:-5.23181:16|TR130EE|TR130EE>

Additional Information on Arrival

If you give us an idea of what time you will arrive we can be there to greet you.

Otherwise, if you wish to be totally flexible, or it is late when you arrive or we are called away unexpectedly, The Studio and the Yurt/s will be unlocked, and solar lights to light the way, so please go in and help yourself.

We are off the beaten track and so all is safe while no ones personal possessions are in the facilities. The key to the Studio to lock it once you have moved in will be in the back of the door. The Yurt/s cannot be locked but are safe as we keep an eye on everything 24/7. But if you have any

items you are particularly concerned about you can give them to us for safe keeping or lock them in your car

We supply a fresh bottle of milk, so you can have a cup of tea or coffee when you arrive to help with the settling in.

We also supply 'as standard' tea and coffee for your arrival, small cartons of fruit juice for each person, just in case you have not brought this as there is no shop in the village and the nearest supermarket is approximately 4 miles away in Helston.

We recommend that you shop for basics 'on route' but if you do not have time we provide the above so you can have a cuppa on arrival.

Getting Supplies

We also now provide, at cost (what it costs us) as customers have asked us to as they find cannot access the farms directly where we get it local meat local bacon i.e sausages, pork and beef burgers, and frying steak when available etc for barbeques etc. We also have a small supply of very local goat we can dice up for kebabs for barbeques, and lamb is usually available from July onwards but if sooner I can ask as they may have some at other times (I make the porkburgers myself out of locally bought pork mince so they are made of pure organic pork and there is no rubbish in them, I can do chilli or plain)

All the meat is very local and organic, usually from a smallholders Little Halwin Farm, Porkellis – 01209 861058, which is a smallholding just outside the village, who only sell locally or from the Primrose Herd a bit further away. We usually have bacon and sausages in stock, if you want to be sure of anything else, please let us know by email.

We can with warning get local crab and fish, again from a wholesaler who is an outlet for local fishermen in Penryn and we sell them at cost as a service to visitors. This is usually locally caught fish at a much better price than in the shops. Examples of fish we can get for you is crab @ £12 a lb for white crab meat, raw fresh prawns, whole small fish for barbequing such as mackerel, red mullet – whatever is available that has come in.

Some of these items will be frozen (the sausages for instance, but fish is always fresh) as this is how the farms have to keep them as they cannot guarantee how much will sell at any given week, but they will only have been frozen for a short time and it does not affect the taste. We can keep them in our freezer until you wish to use them.

If you want fish to be sure it is fresh we get it on Mondays as the outlet is not open on the weekend, so let us know what you would like when you arrive and you will have it on Monday night, however the best time to buy their fish is on Thursdays to get a bigger selection. If you require Porkburgers they would not usually be available until the Tuesday as I make them fresh.



For your information the nearest supermarkets from The Studio are:

Tescos Helston -

This is the nearest supermarket from Toad Hall

Clodgey Lane, Helston

<http://www.tesco.com/storeLocator/default.asp>

?bID=6264 <http://maps.google.com/maps?q=tescos%20helston%20postcode&um=1&ie=UTF-8&sa=N&tab=wl> <http://www.facebook.com/group.php?gid=29711911874>

Sainsbury's

Also in Clodgey Lane Helston, Further down near Flambards theme park:

<http://www.flambards.co.uk/>

http://www.sainsburys.co.uk/sol/storelocator/storelocator_results_list_view.jsp;SOLSESSIONID=PhRLzY1S5ws2MRyvnLLYVWx2yqpLn9P4MQDj5bTgzY4xwmJ2vqTS!-603100116!51239979

Clodgey Lane

HELSTON

TR13 8BN **Telephone:** 01326 435500

In addition, if requested at cost - about a week before your arrival - we can supply local farm bred bacon, bread and cereal for your first morning and eggs from our chickens if they are laying, and in fact anything else as long as we have some warning.

There is also a farm down the road that produces their own bacon, pork, beef and other meat and some vegetables and fruit for sale, depending on the time of year. You can just pop in a buy what they have available or ask me to get it for you as where they are can be difficult to find if you do not know the area.

However if you do not wish to self cater there are many places to eat nearby.





Eating Out & Local Attractions and Interest

The nearest place to eat is in the village. Our local pub, **The Star Inn**, at the bottom of the lane from the smallholding as you can see from the directions above is only a short stroll, if you intend to come back from the pub after dark it is advisable to bring a torch.

The Star Inn <http://www.ukpubfinder.com/pub/1303> has a good reputation as a 'Gastro' pub, unusually so for such a rural village. So you can get some very good food there most evenings and Wednesday to Sunday lunchtimes. While they do not do child specific meals they will give you smaller portions of their meals for children or two plates to split as a meal between two children.

The Star Inn facebook profile

<http://www.facebook.com/profile.php?id=100000272638698&ref=ts#!/profile.php?id=100000272638698&sk=wall>

As their eating area is very small it may be advantageous to ring and book if you require a lunchtime or evening meal on any specific day, The Star Inn Phone number is 01326 340360



In the winter The Star is closed on Mondays all day and only open at lunchtimes Friday, Saturday, & Sunday, with no food on Sunday night. They do open all week once the season gets underway, but the dates this starts can vary according to demand. If you are unsure if they are open on a lunchtime or evening when you wish to eat or drink there, please phone them or ask us. (I took this picture of

the Morris Dancers there and it was published in a magazine)

There is also the award winning **Golden Lion**

<http://www.golden-lion-inn.co.uk/> less than 2 miles from the Studio which does some very good food and does supply specific children's meals, about 2 1/2 miles away on Stithians Lake .

Stithans Lake is beautiful in itself and a lovely place just to walk or watch the rare birds that visit the lake . It also has a cycle path around it, Cycle hire and water sports





Stithians Lake Water sports:

There is also a nice cafe overlooking the lake for breakfast, light meals, coffee or snacks in the daytime.

<http://www.swlakestrust.org.uk/lakes-and-facilities/good-food/stithians>

<http://www.visitcornwall.com/site/things-to-do/activities/stithians-lake-p457203>

Poldark Mine <http://www.poldark-mine.co.uk/> about 3/4 a mile away is free to

enter the restaurant/cafe but you have to pay to go in the grounds and to go down the mine. The cafe for light meals and breakfast and a bar with a restaurant in the evenings at weekends with places to sit outside and eat in very pleasant gardens and does a range of more traditional and fast meals including breakfasts, chips, Cornish pasties, burgers etc as well as less basic food.



The New Inn <http://www.users.zetnet.co.uk/cornwall/new.html> is a very traditional, welcoming and cosy pub about 2 miles away which is used extensively by locals. It is in fact known as the 'locals' pub.

The manager, Nigel, is extremely welcoming to all.

His wife and daughter manage the kitchen, are both professionally trained chefs and offer extensive bar snacks and full meals. My daughter has also worked there as a chef when she was training.



The New Inn also has a separate restaurant and you can choose to eat a bar snack there or any of the meals offered either in the bar or in the restaurant.

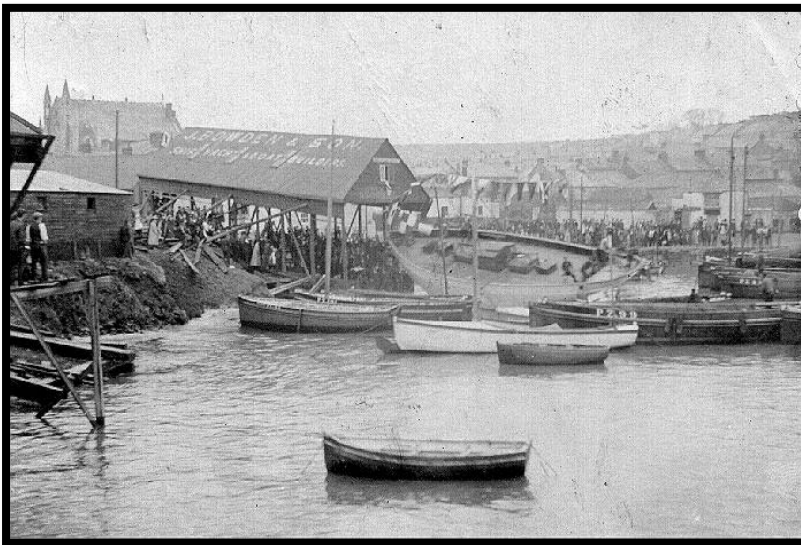
Their meals are of a very reasonable cost, and very appetizing. The New Inn and caters specifically for

children and is VERY dog friendly, dogs are always welcome in the bar even if you are eating

The Halfway House <http://www.halfwayhousecornwall.co.uk/>

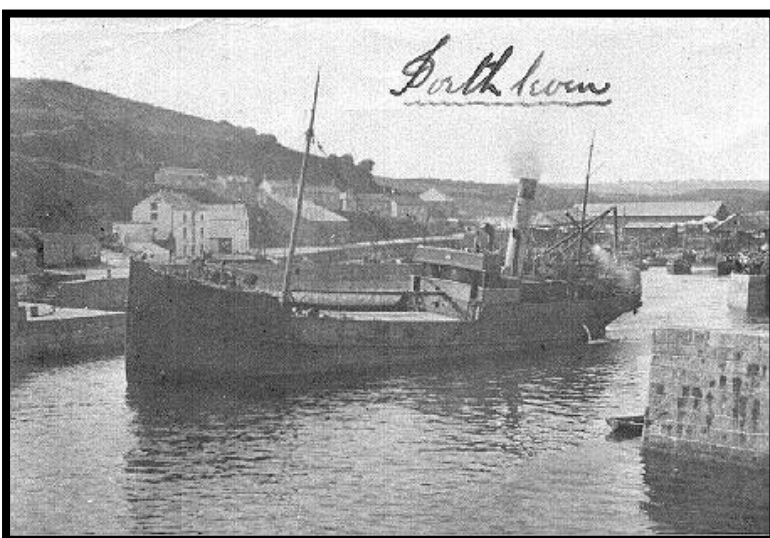
<http://www.pubtrail.co.uk/cornwall/halfway-house-rame-cross.htm> This is on the main Falmouth Road under 3 miles from Toad Hall and is an ancient stage coaching house. In fact it is called the Halfway House because it is almost exactly half way on the approximately 17 mile Helston to Falmouth road and it was the half way stopping point to feed and water the horses

(However these days it does not look anywhere near as old as it is unfortunately. As due to modern alterations and additions the original layout and building is not apparent but some of its heritage as a coaching Inn can be guessed at due to the large size of the car park, which was once used to accommodate stage coaches, passengers and to feed and water the horses)



The Halfway House it is very friendly, has a Carvery every day and Sundays and on Wednesdays does reduced price meals for those over 60 .

Porthleven is our nearest fishing harbour. This is a very large harbour, far larger than would be needed to only accommodate fishing vessels.



The reason Porthleven Harbour is so large compared to most Cornish fishing villages is in fact it was never built to be only a fishing boat harbour, but was the hub of the tin and other industry in this part of Cornwall for many years.

Porthleven Harbour was not built just for small fishing boats, although pilchard, mackerel, fishing and smoking played a part, as did boat building

However the main purpose of the harbour when it was build was to accommodate the relatively big



ships of the 17th to 19th century - reception of vessels of from 200 to 400 tons, up to the steamship era - that transported tin, china clay, soap rock and other minerals out of Cornwall to all over the world from the local mines and to bring industrial supplies of timber, coal, lime and food for the tin mining workforce into Cornwall.

An extensive history of Porthleven Harbour can be found here:

<http://freepages.history.rootsweb.ancestry.com/~helstonhistory/porthlevenharbourpage.htm>

<http://www.porthleven-online.com/custom9.html>

A history of Porthleven and the origin of its name can be found here <http://www.porthleven-online.com/custom9.html>

Porthleven very good place just to walk around and take in the local history and atmosphere and get a feel for the industrial and economic hub Cornwall was in the heyday of local tin mining and industry.

Porthleven also has some ancient and lovely pubs such as the

- Ship Inn - <http://www.theshipinncornwall.co.uk/>
- Harbour Inn - <http://www.harbourinnporthleven.co.uk/>
- Atlantic Inn - <http://www.theatlanticinn.co.uk/>

All serve such good food and have a great atmosphere, but there is also the Porthleven restaurants that should not be missed. Porthleven has so many restaurants specialising in seafood and fish .

Also seafood and fish can be bought to cook at home - at the Studio - from the fisherman's sales outlet in Porthleven or Newlin, or we can get fish for you as stated above.



'Although the economy in Porthleven has changed it continued to grow. The population of Porthleven was 3190 people in 2001. Fishing still continues from Porthleven with crab, lobster and crayfish being caught locally. Some of this seafood is sold at the award winning Quayside Fish'

In Porthleven we particularly like Kota <http://www.kotarestaurant.co.uk/> for us this is a treat. It is quite expensive and more 'fine dining' than family food.

However there are many other restaurants in Porthleven serving a variety of food that you may like. <http://www.porthleven-online.com/gpage2.html> .



One of our other jointly favourite Restaurants (and beach) a little further away is the **Sandbar at Praa Sands**: <http://www.sandbarpraasands.co.uk/>

We particularly like the Sandbar as it is right on the beach at Praa Sands. The pub restaurant has large picture windows overlooking the sea and on stormy days you can watch the surfers and kite surfers that are always there or on good days the

beach is a great beach with good facilities.

Not only is this pub on the beach with tremendous views, the beach itself is one of the best in the area.

But the beach itself is not built up, or that crowded and yet has all facilities and you can hire out or buy surf boards, body boards and surf skis

If you ask we can give you information about places to eat within 20 miles as our daughter was a local chef (she now works in Ascot) and has 'inside' knowledge of many of them.



Pandora Inn

<http://www.pandorainn.com/> This is a very old Inn, situated between Mylor and Restronguet Creek

This burnt down 2 years ago due to a kitchen fire but has now been restored. My daughter was a chef there before the fire. It has now been rebuilt and restored

Mylor Harbour is also great for those with dogs – so dog friendly and several

restaurants where they accept dogsActivities and Beaches etc

To have a fully arranged holiday in terms of activities, it is best to be fully informed beforehand and make your own arrangements and plans. There are lots to do in the area, but some of the activities need to be booked in advance and this includes meals at some of the better restaurants.

There are too many to list but I will expand this document when I have time and list a few more.



Poldark Mine <http://www.poldark-mine.co.uk/> about 3/4 to a mile away . There are beautiful grounds and activities and crafts to buy, a cafe and restaurant in the evenings and regular mine tours

They also sometimes do night time mine 'ghost' tours

<http://www.hauntedsouthwest.com/apps/photos/photo?photoid=86736459>



Stithians Lake Water sports:

<http://www.itsadventuresouthwest.co.uk/main/en/provider-12172.html> area itself also has a nice cafe overlooking the lake for breakfast, light meals, coffee or snacks in the daytime.

<http://www.visitcornwall.com/site/things-to-do/activities/stithians-lake-p457203>

Horse Riding

The first to mention is, Wheal Buller Riding School Opened in 1984 is a family run business which is open every day all the year for hacking, lessons and riding holidays.

Run by Janet Dallimore and her daughter Karen Trezise. It is set in the heart of the Cornish countryside with riding from coast to coast along the Mineral Tramways World Heritage Site and around Carn Brea Castle.

You could also try this site: <http://www.cornwall-online.co.uk/horse-riding/Welcome.html>

To be updated

We do supply free wireless internet access on the property through BT Openzone or BT Fon service, or through our home network for you to make bookings and find out what is on in the area.

If your internet access is with BT this is free, otherwise you do have to become a member of this service to access it and this can be subscribed to before you arrive or from here by going to their website. <http://www.btfon.com/>

If you are not a member and do not wish to become one we will give you free internet access through our home network. To do this you can either plug the Ethernet cable provided into your Laptop or for wireless , please ask me for the password.

However if you want to know more before you arrive about specific activities available in the area - such as:

The best beaches to suit your own individual requirements, water sports, sailing, surfing, golf, fishing

- both course and sea - horse riding, walking, cycling, eating, gardens, activity centres, tourist attractions, mining, National Trust areas or other Cornish heritage in the area, or anything else, please let me know and I will email you back with the details

If you need a list of dog friendly beaches, please let me know and I will email them to you

